

# IP54 LED downlight

## INSTALLATION GUIDE

990.0391.02 REV 2 - 03/11/2023

### Important



The LED module in this luminaire is not replaceable. When the light source reaches its end of life, the whole luminaire must be replaced.



The control gear supplied with this luminaire shall only be replaced by the manufacturer, service agent or a similarly qualified person



This luminaire must not be covered with thermally insulating material.

Please retain this guide for future reference and recycle packaging.

Please refer to product technical datasheet for light source energy class information.

This luminaire has an ingress protection rating of **IP54** from the room side once installed.



**NOTE: Luminaire style may vary**

**1**

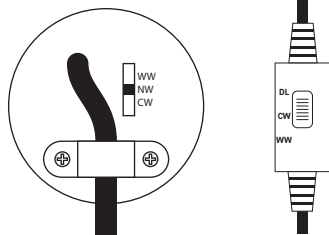
Isolate mains supply before commencing installation



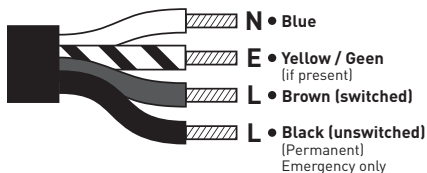
- Using the information below, cut the appropriate sized hole at the required location using a hole saw.

Bezel diameter	Cut-out diameter
110 mm	<b>90 mm</b>
190 mm	<b>160 mm</b>
228 mm	<b>200 mm</b>

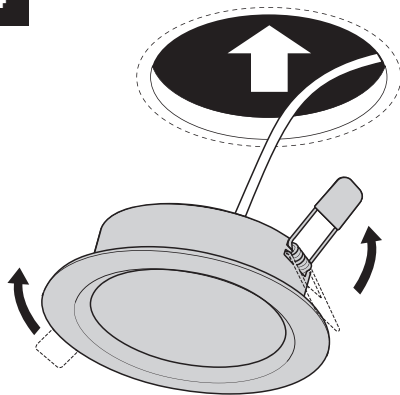
- Emergency versions with integral charge indicator will require an additional 5mm-deep notch on the edge of the cut-out. To avoid damage during installation, ensure the indicator is aligned with the notch when inserting the luminaire (Section 4).

**2**

- Certain variants of this product may be supplied with a selectable colour temperature LED module.
- In order to select the required colour temperature, isolate the mains supply and select appropriate setting on the switch, located on the luminaire body or supply lead.
- Please note: Changing the CCT without isolating the power supply may damage the luminaire and will invalidate the warranty.

**3**

- Terminal block not included. Installation must be performed by a qualified person in accordance with the latest edition of the IEE wiring regulations BS7671.
- If no terminal block is available, carefully remove supply leads from control gear and connect directly into terminals, taking care to follow markings on housing.
- For variants fitted with DALI control gear, please refer to supplementary installation guide.

**4**

- Insert driver into ceiling void
- Retract fixing springs and insert luminaire into ceiling aperture, ensuring there is at least 50 mm air space around the luminaire body and all control gear.

**Note:** Luminaire style may vary

Reinstate mains supply

