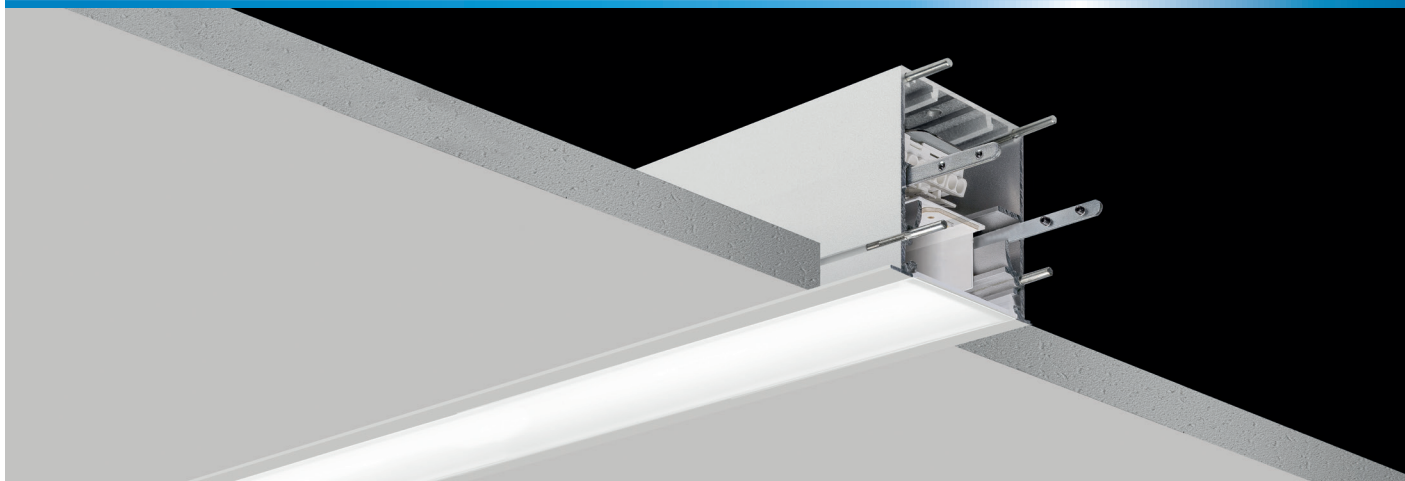


183 Series Datasheet

TRIDONIC
TECHNOLOGY
INSIDE

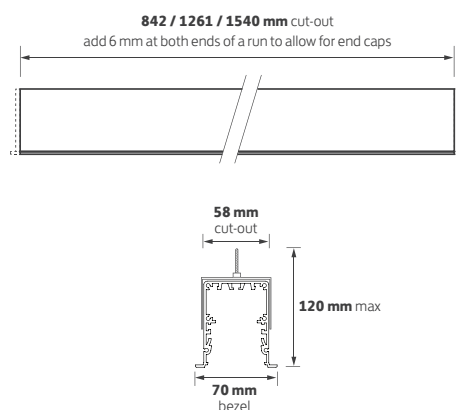
LUMEN LOOP



Key Features

- ▶ Recessed, continuous linear profile system
- ▶ Through wiring in all lengths
- ▶ Tridonic LED and driver combinations
- ▶ TPa elegant opal lens for general areas as standard
- ▶ Low glare prismatic lens option for LG7 compliance
- ▶ Lumen depreciation L80/F10 @ >72,000 hours
- ▶ ECA compliant efficacies of up to 127 lm / tcW
- ▶ Available in 3 standard 'building block' lengths
- ▶ Delivering approx. 2200 lm/m as standard
- ▶ Manufactured, tested and validated in the U.K.

Technical Drawing



DC

Declaration of Conformity available

Ordering Information

Length	Colour	Luminaire	Intermediate	Luminaire	Luminaire
		output (lm)	Model Ref.	output (lm)	output (lm)
		Std		/LO	/HO
850 mm	830	1725	183.001	1175	2725
850 mm	840	1825	183.002	1225	2875
1.2 m	830	2575	183.003	1750	4100
1.2 m	840	2725	183.004	1850	4300
1.5 m	830	3150	183.005	2150	5000
1.5 m	840	3325	183.006	2250	5250

Options

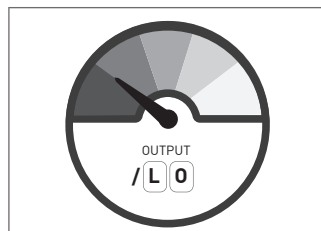
Please select from the options below.

Pair of end caps accessories	SECAP
1 x joining / through wire accessory kit	JKIT
Lower output	/LO
Higher output	/HO
Low glare prismatic lens for LG7 compliance	/LG
SwitchDIM, DALI or DSI	/ECO
EM conversion (not 183.001 / 183.002)	/EMI

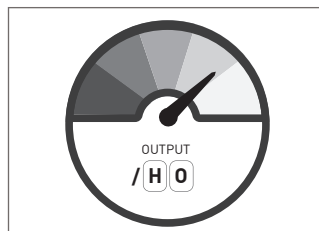
Options



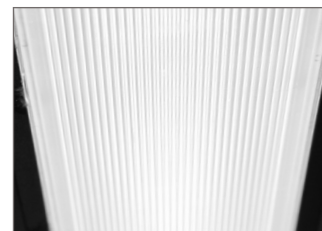
SECAP
Pair of end caps



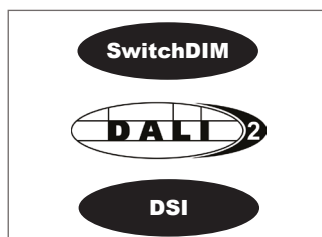
/LO
Lower output



/HO
Higher output



/LG
Low glare prismatic lens



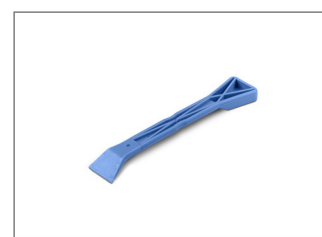
/ECO
SwitchDIM, DALI or DSI



/EMI
EM conversion (not 183.001 / 183.002)



JKIT
Joining / through wire kit



PT001
Lens removal tool