

168 Series

Data Sheet



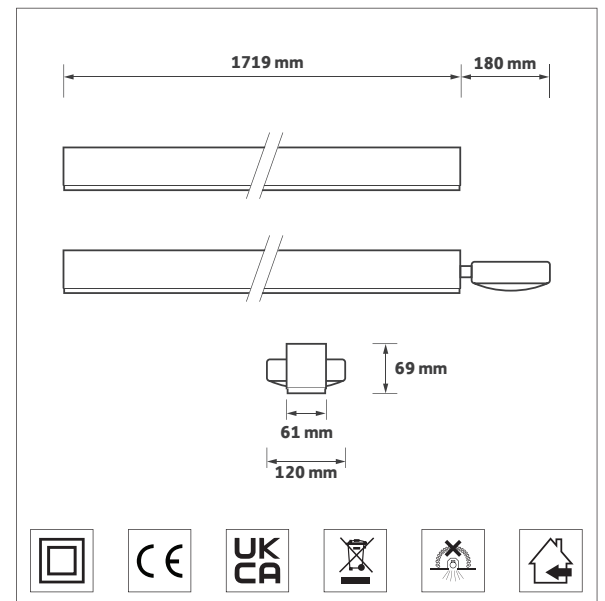
LUMENLOOP



KEY FEATURES

- High output SMART LED industrial linear luminaire
- Designed for aisle, warehouse, retail and hall applications
- Philips LED and driver system
- EasyAir sensor system option, inc. dimming, motion sensing, daylight harvesting and wireless mesh / control
- Surface, suspended or BESA mounting options
- Long life up to 70,000 hours L70
- Ledil 84° + 35° PMMA oval lens as standard
- Excellent colour consistency and flicker-free operation
- Excellent efficacy up to 141 lm/tcW

DIMENSIONS



ORDERING INFORMATION

Luminaire output (lm)	Colour temp	Luminaire power (tcW)	Light source efficacy (lm/W)	Luminaire efficacy (lm/tcW)	Model ref.
8025	840	57	176	141	168.001
11,850	840	88	163	135	168.002

OPTIONS

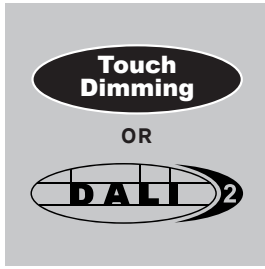
Options	Suffix
Control gear	/T+DALI, /EA
Emergency - Remote indicator	/EMI, /EMDI
Optics	/MB, /WB
Product variations available	PV.

168 Series

Options



LUMENLOOP



/T+DALI

Touch dimming or DALI control gear



/EA

EasyAir sensor system



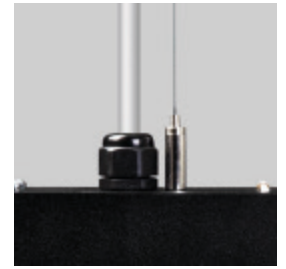
/EMI

Emergency Integral indicator



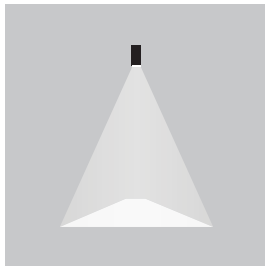
/EMDI

DALI / Self test EM Integral indicator



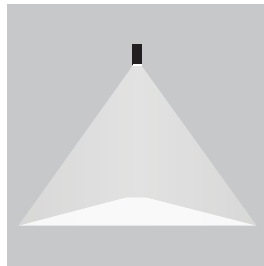
SUS168

2 m suspension kit



/MB

Medium beam (34°)



/WB

Wide beam (92°)



EAWS001

EasyAir wall switch



App

Available from Google Play store

PV - PRODUCT VARIATIONS



PV - Contact Sales
Choice of connectors



PV - Contact Sales
LSOH / LSF cable



PV - Contact Sales
Sensor ready
Options available



PV - Contact Sales
D4i sensors available



PV - Contact Sales
Finish options