

# INSTALLATION GUIDE:

LED FRAMELIGHT  
990.0266.01



## IMPORTANT:

The luminaire must not be covered by any debris or insulating material. Ensure there is a minimum of 50 mm airspace around the luminaire and control gear. Electrical termination must be carried out by a qualified electrician in accordance with the latest edition of IEE wiring regulations BS7671.

**PLEASE RETAIN THIS GUIDE FOR FUTURE REFERENCE AND RECYCLE PACKAGING.**

### A



**ISOLATE MAINS SUPPLY BEFORE COMMENCING INSTALLATION**



180 x 180 mm



339 x 180 mm



495 x 180 mm

Cut-out

- Cut out the appropriate hole at the required location using the illustration above as a guide.

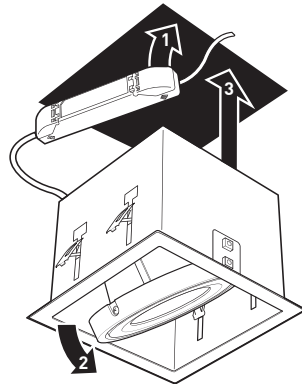
### B

- Connect mains supply to luminaire using a terminal block (not supplied) compliant with the requirements of EN60998-2-1 or 2-2
- For Touch & Dim wiring see installation guide **990.0009.01**.
- For DALI wiring see installation guide **990.0028.01**.



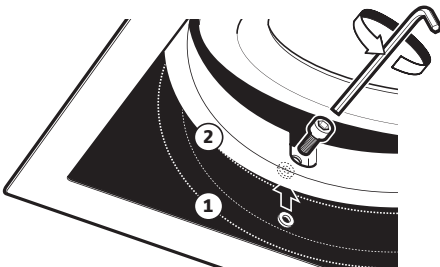
### D

- 1 Offer the driver(s) up into the ceiling void.
- 2 Tilt the gimbal to allow access to two of the fixing springs.
- 3 Offer luminaire up into cut-out.



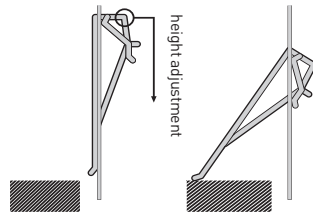
### C

- If required, the gimbal may be relocated from the standard position **1** to a fully recessed position **2**
- Remove the 2 inner pivot screws and washers, reposition the gimbal, then refit the screws and washers.



### E

- Lock the luminaire in place by means of the adjustable fixing springs as shown below.



### F

- Tilt the gimbal to the required position and secure by tightening the pivot screws, if necessary.



**REINSTATE MAINS SUPPLY**

# INSTALLATION GUIDE:

LED FRAMELIGHT - PLASTER-IN  
990.0266.02



## IMPORTANT:

The luminaire must not be covered by any debris or insulating material. Ensure there is a minimum of 50 mm airspace around the luminaire and control gear. Electrical termination must be carried out by a qualified electrician in accordance with the latest edition of IEE wiring regulations BS7671.

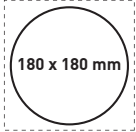
The LED module(s) in this luminaire are non-user replaceable.

**PLEASE RETAIN THIS GUIDE FOR FUTURE REFERENCE AND RECYCLE PACKAGING.**

### A

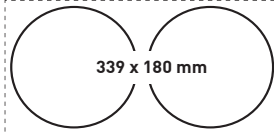


**ISOLATE MAINS SUPPLY BEFORE COMMENCING INSTALLATION**



180 x 180 mm

Cut-out



339 x 180 mm

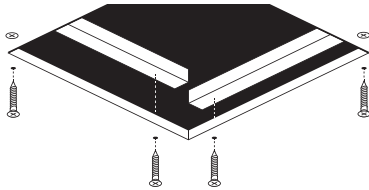
- Cut out appropriate hole at required location using illustration above as a guide.



495 x 180 mm

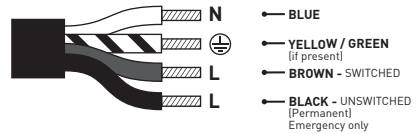
### B

- Secure timber battens around back edge of aperture, ensuring fixings are flush with surface.



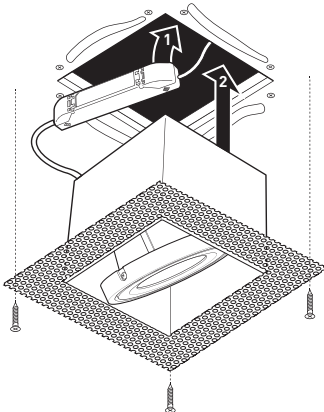
### C

- Connect the luminaire to the mains supply using a terminal block (not supplied) compliant with the requirements of EN60998-2-1 or 2-2
- For Switch Dim / Touch Dim / DALI wiring see installation guide **990.0009.01**.



### D

- Apply a bead of solvent-free grab adhesive 5-10 mm from edge of aperture.
- Offer driver(s) up into ceiling void.
- Offer luminaire up into cut-out
- Secure luminaire using drywall screws (not supplied) through mesh & plasterboard into timber battens.
- Ensure screw heads are as flush as possible and remove any excess adhesive.



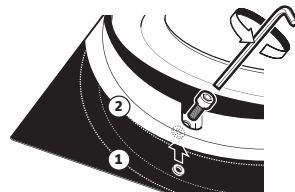
### E

**IMPORTANT: Please ensure that the luminaire heads are adequately protected from damage before proceeding.**

- Once adhesive is fully cured, apply a PVA bonding coat and apply plaster finish.

### F

- If required, gimbal(s) may be relocated from standard position ① to recessed position ②
- Remove 2 x inner pivot screws & washers, reposition gimbal, then refit screws & washers.



- Tilt gimbal(s) to required position & tighten pivot screws to secure, if necessary.



**REINSTATE MAINS SUPPLY**