

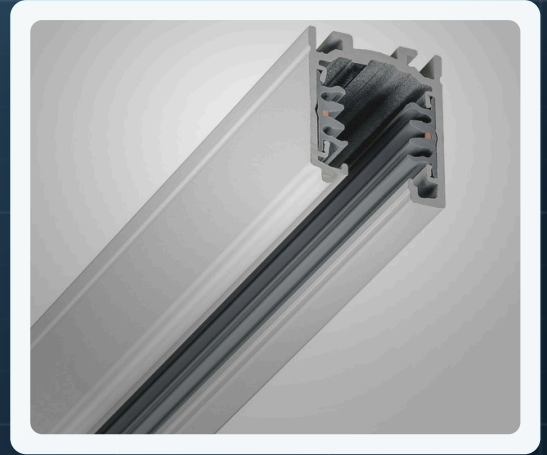
TRACK SYSTEMS / SURFACE MOUNTED / THREE CIRCUIT AND DALI

Stucchi OneTrack

Surface-mounted track system based on the Eurostandard Plus platform.

Stucchi OneTrack is listed as a surface-mounted lighting track system based on the Eurostandard Plus platform and suitable for use with Global Trac adaptors.

The source file lists three-circuit and DALI compatibility, modular track accessories, white and black finish options, and dedicated cutting and suspension accessories.






Modular track system
The source file lists track lengths, feeds, connectors and suspension options.



Three circuit and DALI
The system is listed as three-circuit and DALI compatible.



Global Trac compatible
The source sheet lists Global Trac adaptor compatibility.




Project-configured
Accessory choices support modular layout and fixing arrangements.

Key Features

- + Surface-mounted lighting track system
- + Based on the Eurostandard Plus platform
- + Suitable for use with Global Trac adaptors
- + Three circuit and DALI compatible
- + Easy-to-create modular system
- + Available in black or white

Technical Drawing



Track width
37.8 mm

Track height
31.4 mm



Track lengths
1 m and 2 m

Ordering Information

DESCRIPTION	WHITE	BLACK
1 m track	9000A-1/W-ST	9000A-1/B-ST
2 m track	9000A-2/W-ST	9000A-2/B-ST
End feed	9001/W	9001/B
Straight connector	9003/W	9003/B
End cap	9004/W	9004/B
L-connector / feed	9011/W	9011/B
Flexible adjustable corner connector	9018/W	9018/B
2 m wire suspension kit	S-9000/114-T/W	S-9000/114-T/B


Options

ACCESSORY TOOL	SUSPENSION	TRACK ACCESSORIES
S-9000/T	SUS_TRK/2M, S-9000/114-T	9001, 9003, 9004, 9011, 9018, 9000/BP-D

UK
CA

CE



DC

Declaration of Conformity available

Please note: Specification values may change due to rapid development of lighting technology. All performance data is taken at an ambient temperature of +25 deg C. Data may be rounded up/down for illustrative purposes. Tolerance range of optical and electrical data is +/-10%. We reserve the right to amend or change details without prior notification. E5DE.