

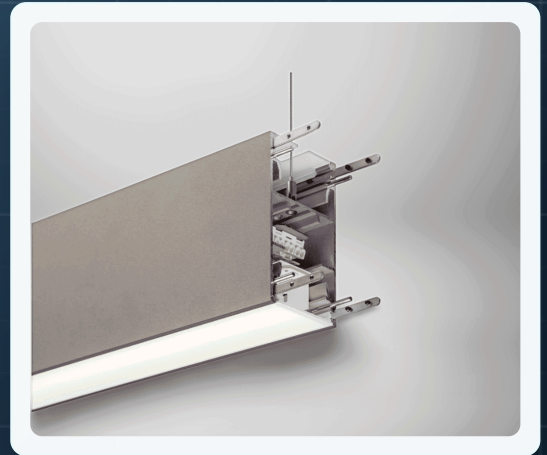
DIRECT / INDIRECT / CONTINUOUS LINEAR

# Radiance

Continuous LED linear lighting with a typical 75:25 direct / indirect output ratio.

Radiance is a continuous direct / indirect LED linear profile for commercial interiors where a clean suspended line, controlled direct output and soft indirect contribution need to work together.

The specification lists through wiring for simple electrical connection, mechanical joining kits with every unit, start / end sections with end caps, RAL 9006 grey as standard and Tridonic low-energy LED and driver technology.



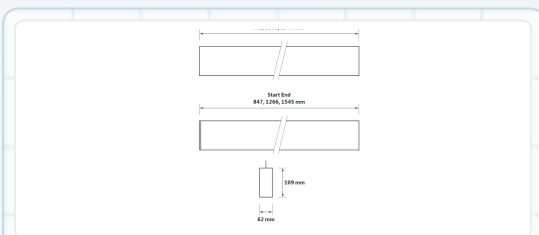
 <p><b>Continuous profile</b> Extruded linear profile system for seamless lines of light.</p>	 <p><b>Direct / indirect</b> Typical 75:25 output ratio with TPa opal lens as standard.</p>	 <p><b>Up to 130 lm/tcm</b> Efficient luminaire package listed for the product.</p>	 <p><b>&gt;72,000h L80/F10</b> Long-life lumen maintenance for commercial project schedules.</p>	 <p><b>Through wired</b> Through wiring is listed for simpler electrical connection on continuous runs.</p>	 <p><b>Made in the UK</b> Manufactured in the UK for commercial specification projects.</p>
--	--	--	---	--	--

## Key Features

- + Continuous direct / indirect linear profile system.
- + Mechanical joining kit supplied with every unit.
- + Typical percentage output ratio 75:25.
- + TPa opal lens for general and visual areas as standard.
- + Tridonic low-energy LED and driver system.
- + 2 m suspension kit.
- + Through wiring for simple electrical connection.
- + Start / end piece includes end cap.
- + Finished in RAL 9006 grey as standard.
- + Low-glare prismatic lens available for office and LG7 compliance.
- + Manufactured in the UK.

## Dimensions

PRODUCT DRAWING



INTERMEDIATE LENGTHS 842, 1261 AND 1540 MM; START-END LENGTHS 847, 1266 AND 1545 MM; 62 MM WIDTH AND 109 MM HEIGHT.

Intermediate lengths  
**842 / 1261 / 1540 mm**

Start-end lengths  
**847 / 1266 / 1545 mm**

Profile width  
**62 mm**

Profile height  
**109 mm**

## Ordering Information

LENGTH	COLOUR TEMP	LUMINAIRE OUTPUT	MODEL REF.	LOWER OUTPUT	HIGHER OUTPUT
850 mm	3000K	2300 lm	<b>RADIANCE.001</b>	1550 lm	3650 lm
850 mm	4000K	2400 lm	<b>RADIANCE.002</b>	1625 lm	3825 lm
1.2 m	3000K	3450 lm	<b>RADIANCE.003</b>	2325 lm	5475 lm
1.2 m	4000K	3600 lm	<b>RADIANCE.004</b>	2450 lm	5725 lm
1.5 m	3000K	4450 lm	<b>RADIANCE.005</b>	3000 lm	7050 lm
1.5 m	4000K	4650 lm	<b>RADIANCE.006</b>	3150 lm	7375 lm

## Options

**START / END SECTION**

/SE

**BODY FINISH**

/WH, /BK

**OUTPUT OPTIONS**

/LO, /HO

**LOW-GLARE LENS**

/LG

**CONTROL GEAR**

/ECO

**EMERGENCY CONVERSION**

/EMI

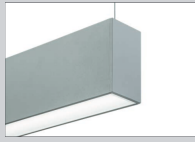


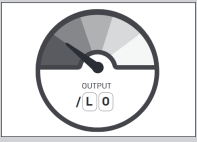
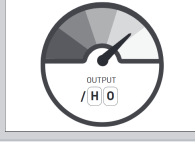



**RADIANCE.ACC.01**

Contact sales

# Specification Options

Finish, output, optic, control, emergency, variation and accessory choices for Radiance schedules.

## Options

 <p><b>/SE</b> Start / end section with end cap</p>	 <p><b>/WH</b> White body</p>	 <p><b>/BK</b> Black body</p>	 <p><b>/LO</b> Lower output</p>
 <p><b>/HO</b> Higher output</p>	 <p><b>/LG</b> Low glare prismatic lens</p>	 <p><b>/ECO</b> SwitchDIM, DALI or DSI</p>	 <p><b>/EMI</b> EM conversion (not RADIANCE.001 / RADIANCE.002)</p>

## Also Available

 <p><b>RADIANCE.ACC.01</b> Other colours and specifications available on request</p>	 <p><b>RADIANCE.ACC.01</b> Custom body colours</p>	 <p><b>RADIANCE.ACC.01</b> Custom colours</p>	 <p><b>RADIANCE.ACC.02</b> Diffuser removal tool</p>
---	---	---	---

		UK CA	CE		DC	Declaration of Conformity available
--	--	----------	----	--	----	-------------------------------------

Please note: Specification values may change due to rapid development of lighting technology. All performance data is taken at an ambient temperature of +25 deg C. Data may be rounded up/down for illustrative purposes. Tolerance range of optical and electrical data is +/-10%. We reserve the right to amend or change details without prior notification. E5DE.