

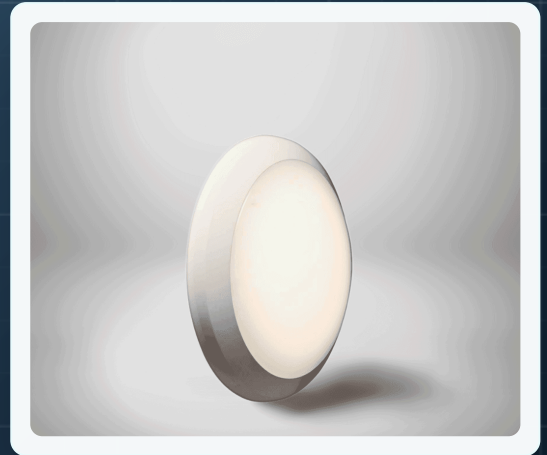
BULKHEAD / IP65 / IK10 / EMERGENCY OPTIONS

Harbor

Robust circular LED bulkhead with sensor, DALI, emergency and finish options.

Harbor is a contemporary LED bulkhead for commercial and industrial spaces where ingress protection, impact resistance and clean diffuser performance all matter. The IP65 and IK10 construction, TP(a) opal diffuser and twist-lock bezel support reliable use in circulation areas, plant rooms, covered external spaces and back-of-house environments.

The schedule covers six model references from 1200 to 2350 lm, 3000K and 4000K options, and suffixes for black bezel, back-lit halo, anti-tamper screws, DALI, wireless control, motion sensing and integral emergency indication.



<p>IP65 / IK10 Sealed against liquid and dust ingress, with impact-tested construction.</p>	<p>TP(a) opal diffuser High-transmission diffuser designed for low spotting and even output.</p>	<p>Up to 72,000h L80 Long-life LED platform for reduced replacement cycles.</p>	<p>Tridonic system Tridonic LED and driver system listed in the technical specification.</p>	<p>DALI / wireless Control suffixes include DALI, SwitchDIM, DSI and Casambi wireless dimming.</p>	<p>Emergency options Integral indicator and DALI emergency variants are available.</p>
--	---	--	---	---	---

Key Features

- Contemporary IP65 / IK10 rated LED bulkhead.
- Twist and lock bezel to conceal fixings.
- Tridonic LED and driver system inside.
- Long life up to 72,000h L80.
- Integral microwave presence detector options.
- High transmission, low spotting TP(a) rated opal diffuser.
- UL94 polycarbonate body with back-lit halo effect option.
- 3 step MacAdam (SDCM).
- DALI, wireless control and emergency options.
- 5 year warranty.

Dimensions

TECHNICAL DRAWING

DIA 380 MM BODY, DIA 300 MM FIXING REFERENCE AND 122 MM DEPTH.

Body diameter Dia 380 mm	Fixing reference Dia 300 mm
Depth 122 mm	Protection IP65 / IK10

Ordering Information

LUMINAIRE OUTPUT (LM)	COLOUR TEMP	LUMINAIRE POWER (TCM)	LIGHT-SOURCE EFFICACY	LUMINAIRE EFFICACY	MODEL REF.
1200	3000K	10	181	120	HARBOR.001
1250	4000K	10	191	125	HARBOR.002
1600	3000K	14	172	114	HARBOR.003
1700	4000K	14	182	121	HARBOR.004
2225	3000K	21	164	106	HARBOR.005
2350	4000K	21	172	112	HARBOR.006

Options

/SD AND /SO ARE NOT AVAILABLE WITH /ECO

FINISH AND ENCLOSURE /BL, /HALO, /AT	CONTROLS AND SENSING /ECO, /SO, /SD, /BTC	EMERGENCY /EMI, /EMDI
PRODUCT VARIATIONS PV - Contact Sales		




Specification Options

Finish, control, sensor, emergency and product variation choices for Harbor project schedules.

Specification Options

 <p>/BL Black bezel</p>	 <p>/HALO Back-lit halo effect</p>	 <p>/AT Anti-tamper diffuser screws</p>	 <p>/ECO SwitchDIM / DALI / DSI</p>	 <p>/SO Integral motion sensor - On / off Not available with /ECO</p>
 <p>/SD Integral motion sensor - On / 10% dim Not available with /ECO</p>	 <p>/BTC Casambi wireless network inc. dimming</p>	 <p>/EMI Emergency integral indicator</p>	 <p>/EMDI DALI emergency integral indicator</p>	

Product Variations

 <p>PV - Contact Sales Grey trim</p>	 <p>PV - Contact Sales Antimicrobial enclosure - Lifetime protection against 99.9% of bacteria</p>	 <p>PV - Contact Sales Tridonic EM-Pro and self-test emergency</p>
--	---	--



Related Products

REV1 / MAY 2026
LL-HARBOR-DS

Related IP-rated product references shown by product type for customer clarity.

Related Products

 <p>Related IP65 batten</p>	 <p>Related 85 mm IP65 / FR90 downlight</p>	 <p>Related 130 mm IP65 downlights</p>	 <p>Related 195 mm IP65 downlights</p>	 <p>Related 237 mm IP65 downlights</p>
 <p>Related IP65 linear downlight</p>				

	UK CA	CE		DC	Declaration of Conformity available
---	----------	----	---	----	-------------------------------------

Please note: Specification values may change due to rapid development of lighting technology. All performance data is taken at an ambient temperature of +25 deg C. Data may be rounded up/down for illustrative purposes. Tolerance range of optical and electrical data is +/-10%. We reserve the right to amend or change details without prior notification. E5DE.